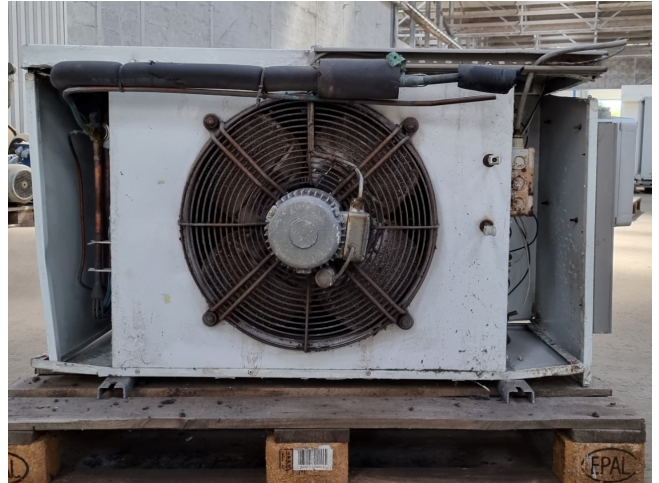


# Helpman LEX 16-7

## Specifications

Marka	Helpman
Typ	LEX 16-7
Ogólna wydajność w kW	8,0
Czynnik chłodzący	Freon
Liczba wentylatorów	1
Średnica wentylatora mm	7
Rozmrażanie	Electric
Przepływ powietrza w m <sup>3</sup> /h	4.660
Rozmiary (LxWxH)	1220x700x680 mm
Volume	10,4 dm <sup>3</sup>
Waga	61 kg
Stock	2



## Description

### Used Helpman LEX 16-7

Used Helpman LEX 16-7 evaporator with electric defrosting. Complete with 1 ATB fan 50 Hz - 0,22 kW - 1330 RPM - diameter 450 mm and a total airflow of 4.660 m<sup>3</sup>/h.

\*All components of this used evaporator will be tested on good working, leak free condition (electro engines), coils, bearings) Choosing HOSBV means buying with warranty. We perform a industrial cleaning. Also, we can arrange your shipment.

